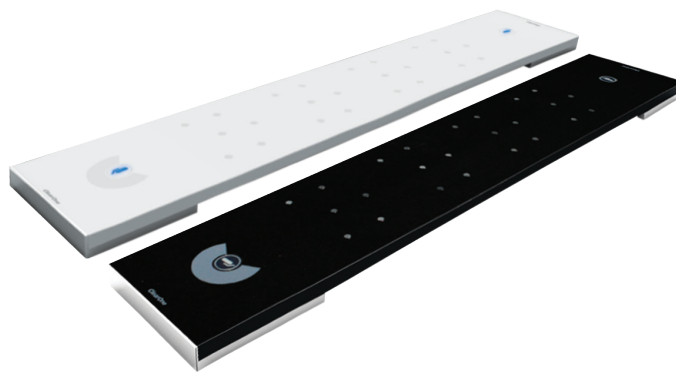


The Beamforming Microphone Array is the Pro-Audio industry's first professional-grade microphone array with beamforming and adaptive steering technology and ClearOne's next-generation Acoustic Echo Cancellation. The ultra-sleek design fits into any conferencing environment and delivers the clearest audio pickup available with adaptive acoustic processing.



### Applications



- Board Room
- Conference Room
- Training Center
- Courtroom
- House of Worship
- Telepresence

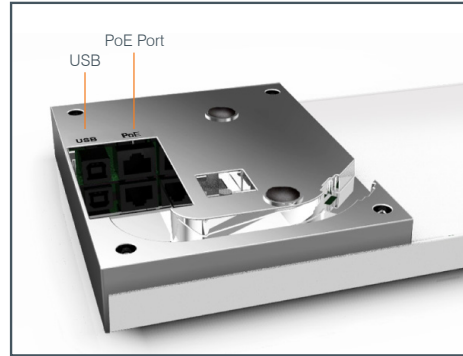
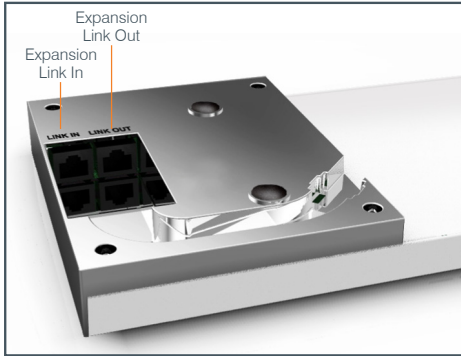
### Features



- + Beamforming & adaptive steering technology
- + Next-generation Acoustic Echo Cancellation
- + 24 microphone elements
- + Mono and stereo modes for diverse applications
- + Flexible mounting for ceiling, wall and tabletop
- + Works with CONVERGE® Pro products: 880, 840T, 880T, 880TA
- + Expandable for larger room applications by daisy-chaining up to three arrays per CONVERGE® Pro unit
- + Adaptive acoustic processing automatically adjusts to room configuration for best possible audio pickup
- + Replaces up to 10 traditional microphones, with twice the pickup range



## BEAMFORMING MICROPHONE ARRAY CONNECTIONS



## Functional Specifications

### AUDIO

#### Acoustic Characteristics:

- 24 microphones
- Auto voice tracking
- Polar Pattern: Custom
- Frequency Response: 150Hz - 16kHz
- Signal to Noise Ratio: >70 dB
- AEC Tail time: 128 ms
- Noise Cancellation: 6 - 15 dB adjustable

#### Auto Mixer Parameters:

- Number of Open Microphones (NOM)
- First mic priority mode
- Last mic mode
- Maximum number of mics mode
- Ambient level
- Gate threshold adjust
- Off attenuation adjust
- Hold time
- Decay rate

#### Matrix Mixing Parameters:

- 1 Channel In
- 18 Expansion Bus In/Out

#### Beamforming Mic Array Configuration:

- Echo cancellation on/off
- Noise cancellation on/off
- Filters:
  - All Pass
  - Low Pass
  - High Pass
  - Notch
  - PEQ
- ALC on/off
- Gain adjust
- Mute on/off
- Auto gate/manual gate

### POWER

- PoE IEEE 802.3AF-2003
- CAT-5 cable or higher
- 6 watts average power consumption

### EXPANSION BUS IN/OUT

- Proprietary Network
- RJ-45 (2)
- Category 5 twisted-pair cable for 200 feet maximum cable length between any two CONVERGE Pro devices

### USB

- Not currently supported. Available for future use

### RS232

- Commands through CONVERGE Pro

### CONFIGURATION & ADMINISTRATION SOFTWARE:

- CONVERGE Console (4.x)

### WEIGHT

- 4.4 lbs (2.0kg)

### MECHANICAL

- 30.0" x 1.00" x 5.75" (WxHxD) (762mm x 25.4mm x 146mm)

### MOUNTING

- Ceiling mount kit (12" & 24" suspension column)
- Wall mount kit
- Table mount

### ENVIRONMENTAL

- Operating Temperature
- 14° F/-10° C to 122° F/50° C ambient temperature

### INSTALLATION

Optimum Mounting Height: About 8 - 10 foot ceiling

#### Optimum Coverage Distance:

- About 6 - 10 traditional cardioid mics
- About 2 - 3 ClearOne ceiling mic array
- About 8 - 10 foot radius

### SUPPORTED CONVERGE PRO\*

- CONVERGE Pro 840T
- CONVERGE Pro 880
- CONVERGE Pro 880T
- CONVERGE Pro 880TA

\*Maximum 3 Beamforming microphone array per each supported CONVERGE Pro unit and maximum 16 units in one stack

### PART NUMBERS

- 910-001-003: White Beamforming Microphone Array
- 910-001-003-B: Black Beamforming Microphone Array
- 910-001-004: PoE Power Supply & Cables Kit for BFM Array
- 910-001-005-12: White Ceiling Mount kit with 12" suspension column for BFM Array
- 910-001-005-12-B: Black Ceiling Mount kit with 12" suspension column for BFM Array
- 910-001-005-24: White Ceiling Mount kit with 24" suspension column for BFM Array
- 910-001-005-24-B: Black Ceiling Mount kit with 24" suspension column for BFM Array
- 910-001-006: White Wall Mount kit for BFM Array
- 910-001-006-B: Black Wall Mount kit for BFM Array

## ClearOne Contacts

### North America

Tel: 801-975-7200  
Toll Free: 800-945-7730  
TechSales: 1-800-705-2103  
Fax: 801-977-0087  
sales@clearone.com

### Europe & Oceania

Tel: +44 1454 616 977  
global@clearone.com

### Asia Pacific

Tel: +852 3590 4526  
global@clearone.com

### Latin America

Tel: 801-974-3621  
global@clearone.com

### Middle East

Tel: +852 3590 4526  
global@clearone.com